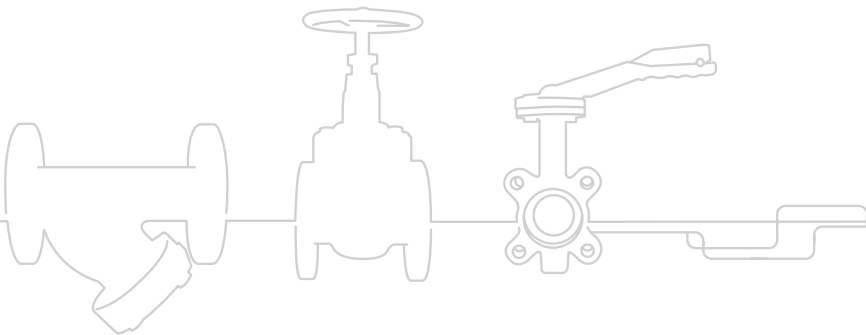


Flexible Connectors



Product Information

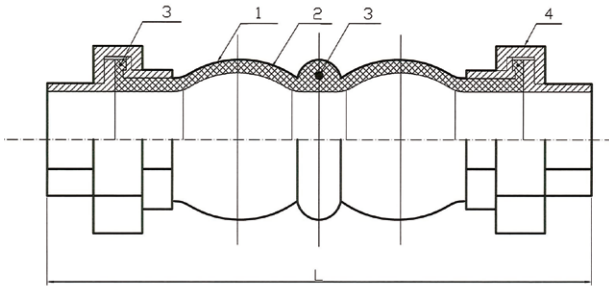




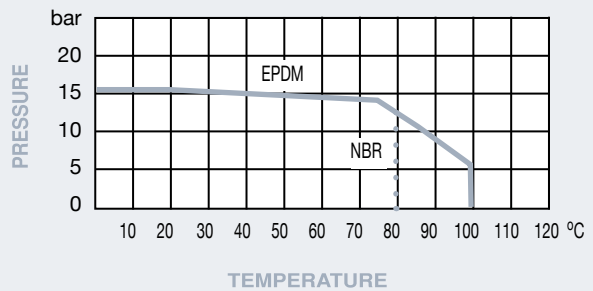
PN16 Screwed Flexible Connector

Features

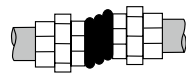
- Screwed BSP Taper BS21
- EPDM/NBR Body Option
- Galvanised Malleable Iron Union Ends
- Nylon Cord Fabric with Steel Reinforcement



Pressure / Temperature



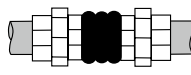
HD - Horizontal Displacement



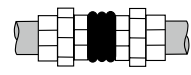
DA - Deflection Angular



Ext - Extension



Comp - Compression



DN	1/2"	3/4"	1"	1 1/4"	1 1/2"	2"	2 1/2"	3"
L	200	200	200	200	200	200	245	245
HD	22	22	22	22	22	22	24	24
DA	45°	45°	45°	45°	45°	45°	45°	45°
Ext	5.6	5.6	5.6	5.6	5.6	5.6	8.10	8.10
Comp	22	22	22	22	22	22	24	24
Kgs	0.70	0.90	1.15	1.40	1.65	2.25	3.25	4.20

Technical Data

Max Pressure 16 Bar

Working Temperature -20°C to +100°C EPDM
-20°C to +80°C NBR

N.	Part Name	Materials 400	Materials 410
1	Body Inner & Outer	EPDM	NBR
	Body Core	Natural Rubber	Natural Rubber
2	Reinforcement	Nylon Cord Wire	Nylon Cord Wire
3	Pressure Ring	Steel Wire	Steel Wire
4	Union End	Malleable Iron	Malleable Iron

Dimensions in mm

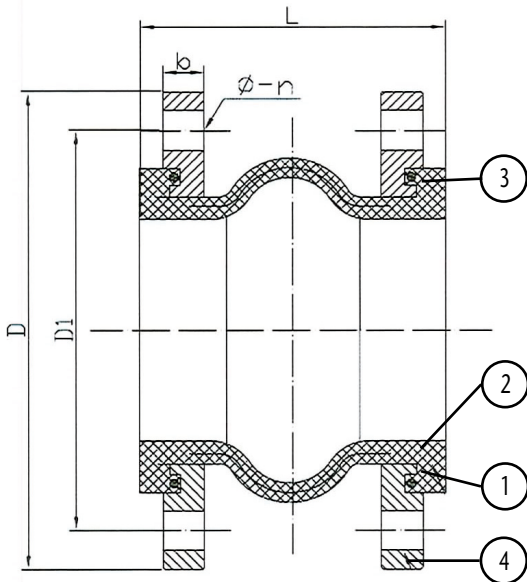
This data sheet is designed as a guide and should not be regarded as wholly accurate in every detail. We reserve the right to amend the specification of any product without notice.



PN16 Flanged Flexible Connector

Features

- Flanged PN16 BS4504
- EPDM/NBR Body Option
- Zinc Plated Carbon Steel Flanges
- Nylon Cord Fabric with Steel Reinforcement

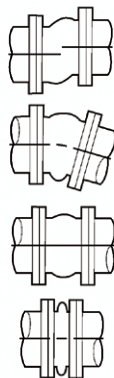


HD - Horizontal Displacement

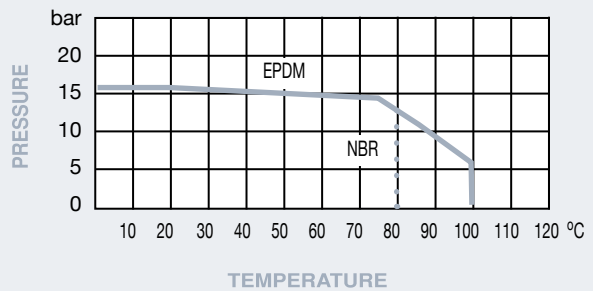
DA - Deflection Angular

Ext - Extension

Comp - Compression



Pressure / Temperature



DN	1 1/4"	1 1/2"	2"	2 1/2"	3"	4"	5"	6"	8"	10"	12"
D	140	150	165	185	200	220	250	285	340	405	460
D1	100	110	125	145	160	180	210	240	295	355	410
b	16	16	18	18	20	20	22	22	24	26	28
L	130	130	130	130	130	130	130	130	130	130	130
Ø-n	18-4	18-4	18-4	18-4	18-8	18-8	18-8	22-8	22-12	26-12	26-12
HD	12	12	12	12	12	12	12	12	12	12	12
DA	15°	15°	15°	15°	15°	15°	15°	15°	15°	15°	15°
Ext	8	8	8	8	8	8	8	8	8	8	8
Comp	15	15	15	15	15	15	15	15	15	15	15
Kgs	1.94	2.14	2.67	3.14	3.57	4.10	5.56	6.70	8.90	9.96	15.93

Technical Data

Max Pressure 16 Bar

Working Temperature -20°C to +100°C EPDM
-20°C to +80°C NBR

N.	Part Name	Materials 420	Materials 430
1	Body Inner & Outer	EPDM	NBR
	Body Core	Natural Rubber	Natural Rubber
2	Reinforcement	Nylon Cord Wire	Nylon Cord Wire
3	Pressure Ring	Steel Wire	Steel Wire
4	Flange	Carbon Steel	Carbon Steel

Dimensions in mm

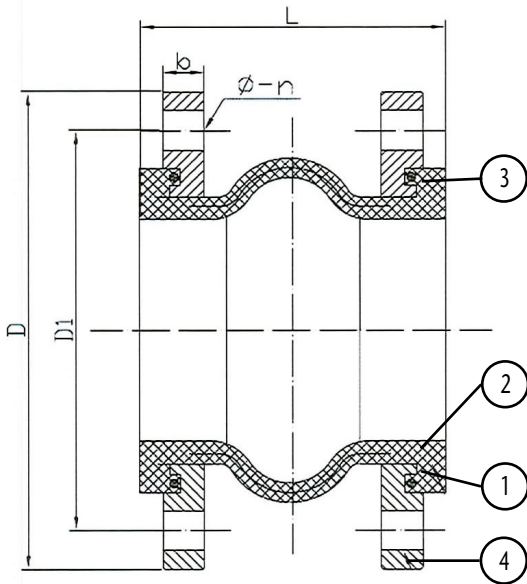
This data sheet is designed as a guide and should not be regarded as wholly accurate in every detail. We reserve the right to amend the specification of any product without notice.



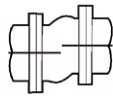
PN10 Flanged Flexible Connector

Features

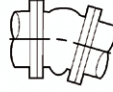
- Flanged PN10 BS4504
- EPDM/NBR Body Option
- Zinc Plated Carbon Steel Flanges
- Nylon Cord Fabric with Steel Reinforcement



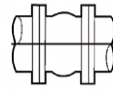
HD - Horizontal Displacement



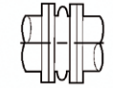
DA - Deflection Angular



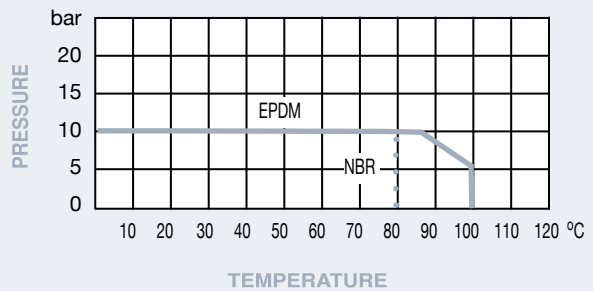
Ext - Extension



Comp - Compression



Pressure / Temperature



DN	1 1/4"	1 1/2"	2"	2 1/2"	3"	4"	5"	6"	8"	10"	12"
D	140	150	165	185	200	220	250	285	340	395	445
D1	100	110	125	145	160	180	210	240	295	350	400
b	16	16	18	18	20	20	22	22	24	26	26
L	130	130	130	130	130	130	130	130	130	130	130
Ø-n	18-4	18-4	18-4	18-4	18-8	18-8	18-8	22-8	22-8	22-12	22-12
HD	12	12	12	12	12	12	12	12	12	12	12
DA	15°	15°	15°	15°	15°	15°	15°	15°	15°	15°	15°
Ext	8	8	8	8	8	8	8	8	8	8	8
Comp	15	15	15	15	15	15	15	15	15	15	15
Kgs	1.94	2.14	2.67	3.14	3.57	4.10	5.56	6.70	8.90	9.96	15.93

Technical Data

Max Pressure 10 Bar
 Working Temperature -20°C to +100°C EPDM
 -20°C to +80°C NBR

N.	Part Name	Materials 425	Materials 435
1	Body Inner & Outer	EPDM	NBR
	Body Core	Natural Rubber	Natural Rubber
2	Reinforcement	Nylon Cord Wire	Nylon Cord Wire
3	Pressure Ring	Steel Wire	Steel Wire
4	Flange	Carbon Steel	Carbon Steel

Dimensions in mm

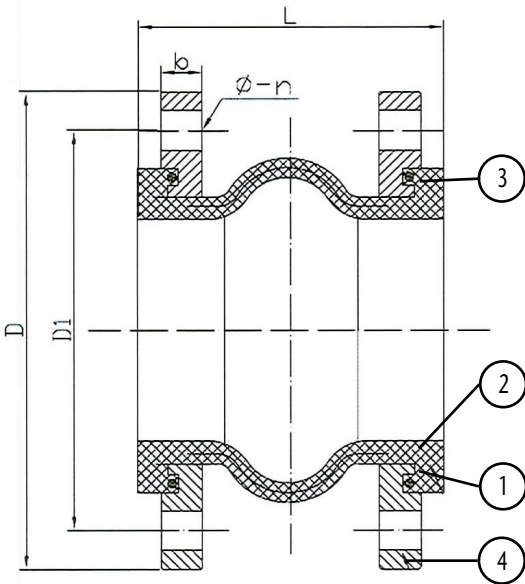
This data sheet is designed as a guide and should not be regarded as wholly accurate in every detail. We reserve the right to amend the specification of any product without notice.



PN6 Flanged Flexible Connector

Features

- Flanged PN6 BS4504
- EPDM Body
- Zinc Plated Carbon Steel Flanges
- Nylon Cord Fabric with Steel Reinforcement

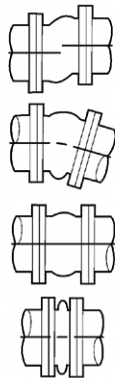


HD - Horizontal Displacement

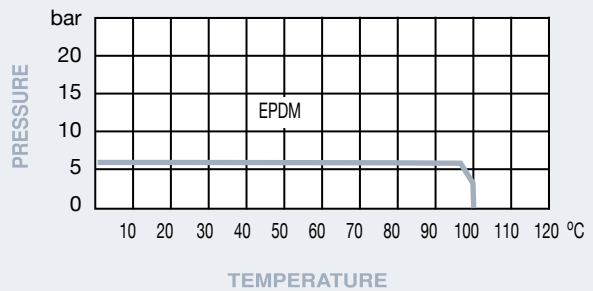
DA - Deflection Angular

Ext - Extension

Comp - Compression



Pressure / Temperature



DN	1 1/4"	1 1/2"	2"	2 1/2"	3"	4"	5"	6"	8"	10"	12"
D	140	150	165	185	200	220	250	285	340	405	460
D1	90	100	110	130	150	170	200	225	280	335	395
b	16	16	18	18	20	20	22	22	24	26	28
L	130	130	130	130	130	130	130	130	130	130	130
Ø-n	14.4	14.4	14.4	14.4	18.4	18.4	18.8	18.8	18.8	18.12	22.12
HD	12	12	12	12	12	12	12	12	12	12	12
DA	15°	15°	15°	15°	15°	15°	15°	15°	15°	15°	15°
Ext	8	8	8	8	8	8	8	8	8	8	8
Comp	15	15	15	15	15	15	15	15	15	15	15
Kgs	1.94	2.14	2.67	3.14	3.57	4.10	5.56	6.70	8.90	9.96	15.93

Technical Data

Max Pressure 6 Bar

Working Temperature -20°C to +100°C EPDM

Dimensions in mm

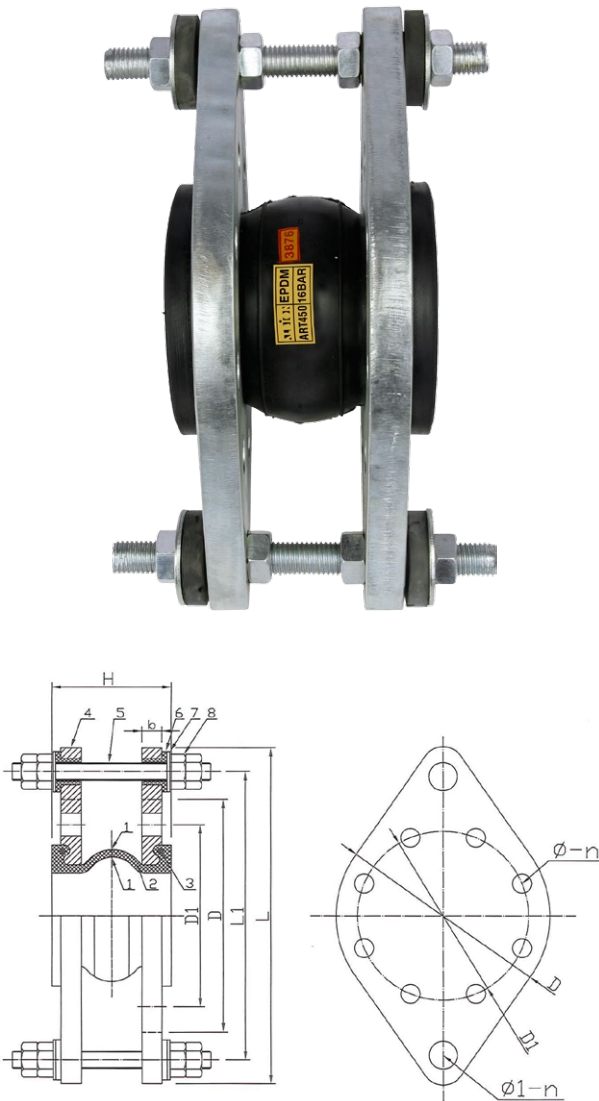
This data sheet is designed as a guide and should not be regarded as wholly accurate in every detail. We reserve the right to amend the specification of any product without notice.

N.	Part Name	Materials 427
1	Body Inner & Outer	EPDM
	Body Core	Natural Rubber
2	Reinforcement	Nylon Cord Wire
3	Pressure Ring	Steel Wire
4	Flange	Carbon Steel

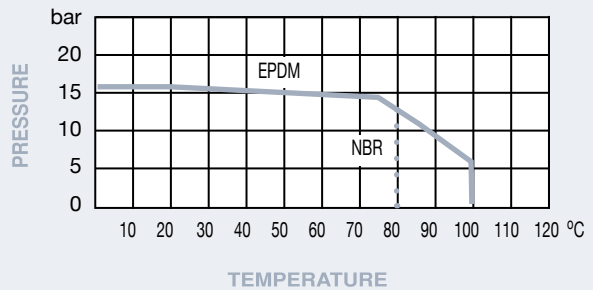
PN16 Tied Flanged Flexible Connector

Features

- Flanged PN16 BS4504
- EPDM/NBR Option
- Zinc Plated Carbon Steel Oval Flanges
- Nylon Cord Fabric with Steel Reinforcement



Pressure / Temperature

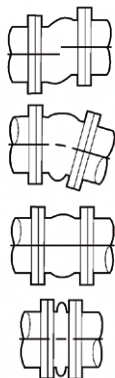


HD - Horizontal Displacement

DA - Deflection Angular

Ext - Extension

Comp - Compression



DN	32	40	50	65	80	100	125	150	200	250	300
L	250	260	275	295	310	330	360	395	450	535	590
L1	195	205	220	240	255	275	305	340	395	470	525
D	140	150	165	185	200	220	250	285	340	405	460
D1	100	110	125	145	160	180	210	240	295	355	410
H	130	130	130	130	130	130	130	130	130	130	130
b	14	14	16	16	18	18	20	20	22	22	26
Ø-n	18-4	18-4	18-4	18-4	18-8	18-8	18-8	22-8	22-8	22-12	22-12
Ø1-n	28-2	28-2	28-2	28-2	28-2	28-2	28-2	32-2	32-2	36-2	36-2
HD	12	12	12	12	12	12	12	12	12	12	12
DA	15°	15°	15°	15°	15°	15°	15°	15°	15°	15°	15°
Ext	8	8	8	8	8	8	8	8	8	8	8
Comp	15	15	15	15	15	15	15	15	15	15	15
Kgs	4.12	4.76	6.47	8.1	9.6	10.8	14.8	17.1	22.8	34.0	41.9

N.	Part Name	Materials 450	Materials 460
1	Body Inner & Outer	EPDM	NBR
	Body Core	Natural Rubber	Natural Rubber
2	Reinforcement	Nylon Cord Wire	Nylon Cord Wire
3	Pressure Ring	Steel Wire	Steel Wire
4	Flange	Carbon Steel	Carbon Steel
5	Limited Bolt	Carbon Steel	Carbon Steel
6	Rubber Washers	NR	NR
7	Plain Washers	Carbon Steel	Carbon Steel
8	Nut	Carbon Steel	Carbon Steel

Technical Data

Max Pressure 16 Bar
 Working Temperature -20°C to +100°C EPDM
 -20°C to +80°C NBR

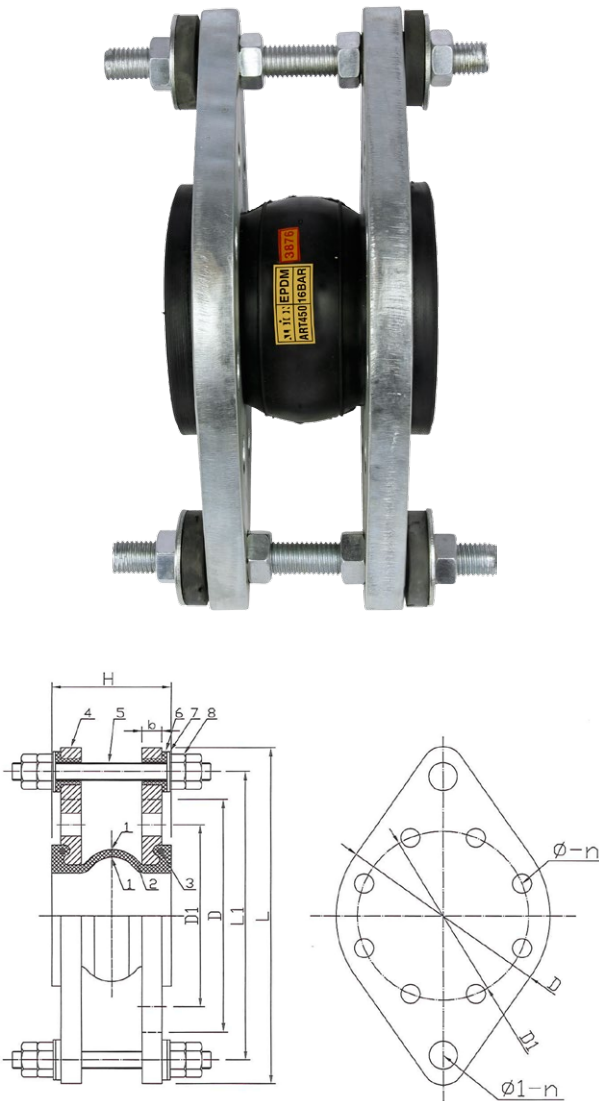
Dimensions in mm

This data sheet is designed as a guide and should not be regarded as wholly accurate in every detail. We reserve the right to amend the specification of any product without notice.

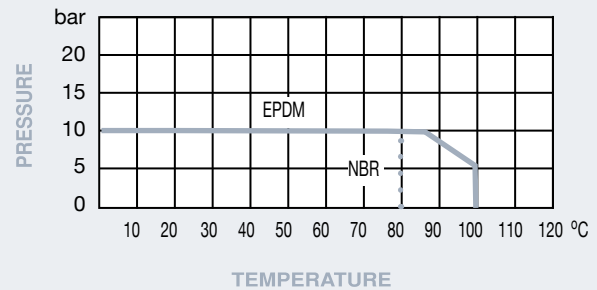
PN10 Tied Flanged Flexible Connector

Features

- Flanged PN10 BS4504
- EPDM/NBR Body Option
- Zinc Plated Carbon Steel Oval Flanges
- Nylon Cord Fabric with Steel Reinforcement



Pressure / Temperature

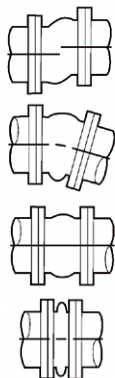


HD - Horizontal Displacement

DA - Deflection Angular

Ext - Extension

Comp - Compression



DN	32	40	50	65	80	100	125	150	200	250	300
L	250	260	275	295	310	330	360	395	450	535	590
L1	195	205	220	240	255	275	305	340	395	470	525
D	140	150	165	185	200	220	250	285	340	405	460
D1	100	110	125	145	160	180	210	240	295	355	410
H	130	130	130	130	130	130	130	130	130	130	130
b	14	14	16	16	18	18	20	20	22	22	26
Ø-n	18-4	18-4	18-4	18-4	18-8	18-8	18-8	22-8	22-8	22-12	22-12
Ø1-n	28-2	28-2	28-2	28-2	28-2	28-2	28-2	32-2	32-2	36-2	36-2
HD	12	12	12	12	12	12	12	12	12	12	12
DA	15°	15°	15°	15°	15°	15°	15°	15°	15°	15°	15°
Ext	8	8	8	8	8	8	8	8	8	8	8
Comp	15	15	15	15	15	15	15	15	15	15	15
Kgs	4.12	4.76	6.47	8.1	9.6	10.8	14.8	17.1	22.8	34.0	41.9

N.	Part Name	Materials 455	Materials 465
1	Body Inner & Outer	EPDM	NBR
	Body Core	Natural Rubber	Natural Rubber
2	Reinforcement	Nylon Cord Wire	Nylon Cord Wire
3	Pressure Ring	Steel Wire	Steel Wire
4	Flange	Carbon Steel	Carbon Steel
5	Limited Bolt	Carbon Steel	Carbon Steel
6	Rubber Washers	NR	NR
7	Plain Washers	Carbon Steel	Carbon Steel
8	Nut	Carbon Steel	Carbon Steel

Technical Data

Max Pressure 10 Bar

Working Temperature -20°C to +100°C EPDM
-20°C to +80°C NBR

Dimensions in mm

This data sheet is designed as a guide and should not be regarded as wholly accurate in every detail. We reserve the right to amend the specification of any product without notice.

Selection

Prior to installation check you have selected the correct flexible connector for the application, pressure, temperature and media requirements.

Inspection

Before installing flexible connectors they should be checked for any damage internally and externally paying particular attention to the mating face. Make sure the sealing face is clean and free of debris as this will prevent sealing with the mating flange.

Installation

Flexible connectors should be installed at their natural length. If gaps are being left in the pipework for retro fitting make sure this gap conforms to the exact natural length of the connector. Pipework should be aligned before installation the connector is not designed to compensate for poorly aligned pipework.

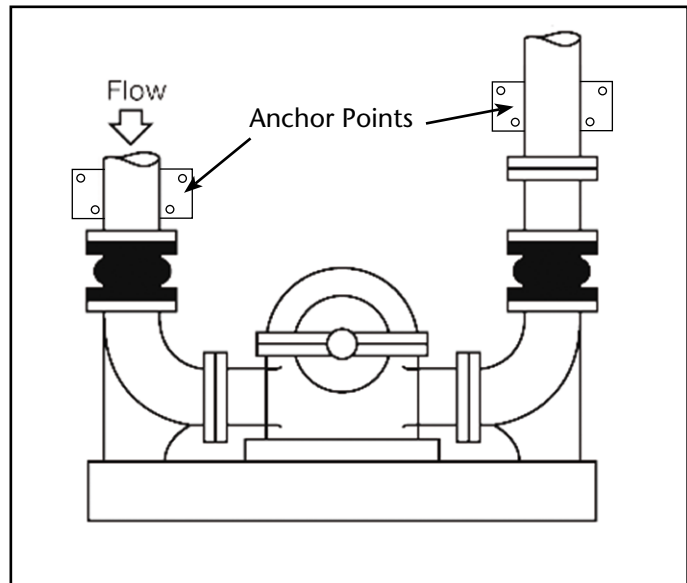
The correct mating flange should always be selected and the sealing face checked for debris and any sharp edges as this could result in damage to the rubber.

If faces of mating flanges have a different diameter a sealing gasket should be used to avoid damage to the rubber face.

Flange bolts must be fitted with the bolt head nearest the connector to avoid damage to the rubber. Bolts must be tightened in a gradual manner tightening opposite bolts in turn. Do not over tighten as this will result in leakage. It is prudent to check tighten the bolts after seven days.

Anchoring

It is essential that flexible connectors are anchored to protect adjacent pipework and plant. Fig 1 shows how to anchor pipework in close installation to pumps. Selection of tied rubber flexible connectors should be considered above 100mm when the pressure is greater than 2.5 bar.



Maintenance

Many years of trouble free installation can be achieved with properly installed flexible connectors. It is essential they are used within their temperature, pressure and media limitations. Regular inspection of the rubber is advised to check for deterioration we also advise a thorough internal and external inspection after a maximum of 3 years of service and replacement should be considered if deterioration or wear is witnessed.

Flange bolts should be checked for correct tightness at regular intervals. The rubber should never be painted as this could damage the rubber and lead to reduced performance and service life.

ANION



Certificate No. 1437B



Certificate No. 1437A

Distributor